



## PRIMA Annual Conference

Register now for PRIMA25



**Registration is now open for PRIMA25!** This once-a-year opportunity is your chance to connect with industry leaders, sharpen your professional skills, and learn about the latest trends.

Over four days, you'll have access to:

**55+ education sessions**

**7+ networking events**

**75+ vendors**

**New for 2025!** PRIMA will be offering onsite Enterprise Risk Management training, May 31 – June 1. [Learn more here.](#) **Register before April 7 to take advantage of the Early Bird registration rates.** [Register here.](#)

REGISTRATION CATEGORIES	EARLY BIRD REGISTRATION RATES (BEFORE APRIL 7)	REGULAR RATES (AFTER APRIL 7)	ONSITE
PRIMA GOVERNMENT RATE	\$725	\$825	\$850
GOVERNMENT NON-MEMBER	\$925	\$1,025	\$1,050
PRIMA CORPORATE AFFILIATE MEMBER	\$825	\$925	\$950
CORPORATE NON-MEMBER	\$1,025	\$1,050	\$1,075

## Download the Annual Conference brochure

Get a sneak peek at what's ahead! [Check out the PRIMA Conference Brochure](#) to see our exceptional speaker lineup, thought-provoking sessions, and exciting opportunities to expand your professional network.

## Hotel and travel information

PRIMA has secured a negotiated rate at the Sheraton Grand Seattle and The Westin Seattle, Sunday, June 1 - Wednesday, June 4. In an effort to support our host city of Seattle and keep registration fees lower, PRIMA asks that you stay at the contracted hotel. [Reserve your room here.](#)



**Sheraton Grand Seattle**  
PRIMA Headquarters

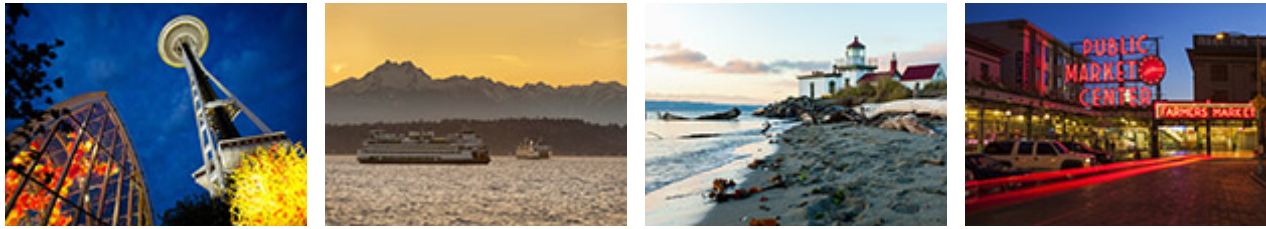
1400 6th Avenue | Seattle, WA 98101  
(315 ft | 1 min. walk)  
Room Rate: \$239 + taxes



**The Westin Seattle**  
Shuttle service provided

1900 5th Avenue | Seattle, WA 98101  
(.3 miles | 7 min. walk)  
Room Rate: \$239 + taxes

## Welcome to Seattle



Seattle is a thriving city surrounded by unmatched natural beauty. While you're here, explore renowned restaurants, breathtaking views, iconic attractions, and vibrant arts and cultural institutions. More travel information can be found on PRIMA's [Visit Seattle site](#).

## Upcoming PRIMA educational opportunities

You don't need to be a PRIMA member to participate in PRIMA's events. However, you'll save on the cost of registration if your entity or organization is a PRIMA member.

## Add in-person ERM training to your PRIMA Annual Conference registration



Prior to the Annual Conference, PRIMA is offering a two-day, in-person ERM training at the Sheraton Grand Seattle. When signing up for PRIMA25, **you can add ERM training to your registration for an additional \$475.**

Don't miss this opportunity! [Learn more and register.](#)

## PRIMA education/resources

Please check out [PRIMA's website](#) to learn more about additional educational opportunities and resources available.

## PRIMA membership

The Public Risk Management Association (PRIMA) is the one-stop resource for education and training, risk resources, and networking opportunities for public sector risk managers.

For more information about PRIMA membership, please contact Paul Gerard, Manager of Membership, at (703) 253-1266 or [membership@primacentral.org](mailto:membership@primacentral.org).

Please also check out PRIMA's [membership brochure](#).

**If you aren't already doing so, please follow PRIMA on our social media channels through the links below!**

